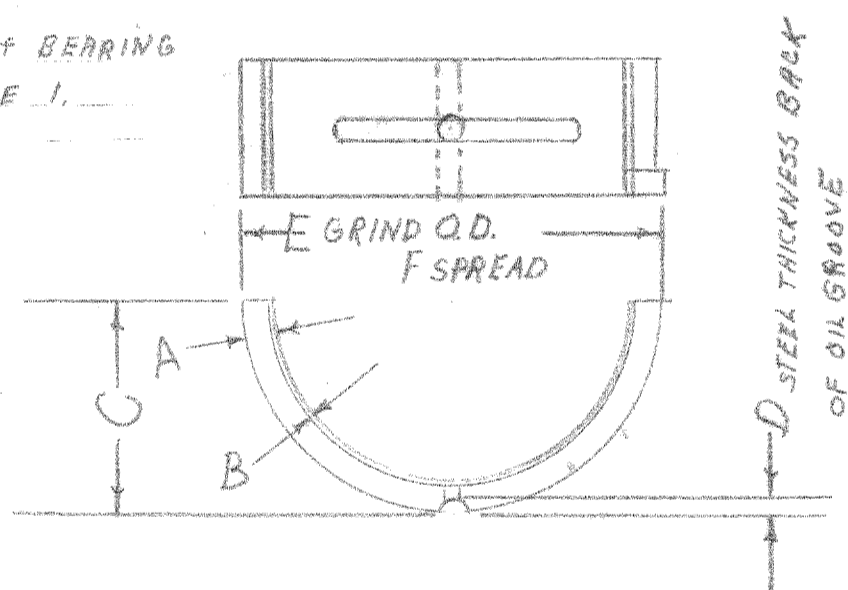
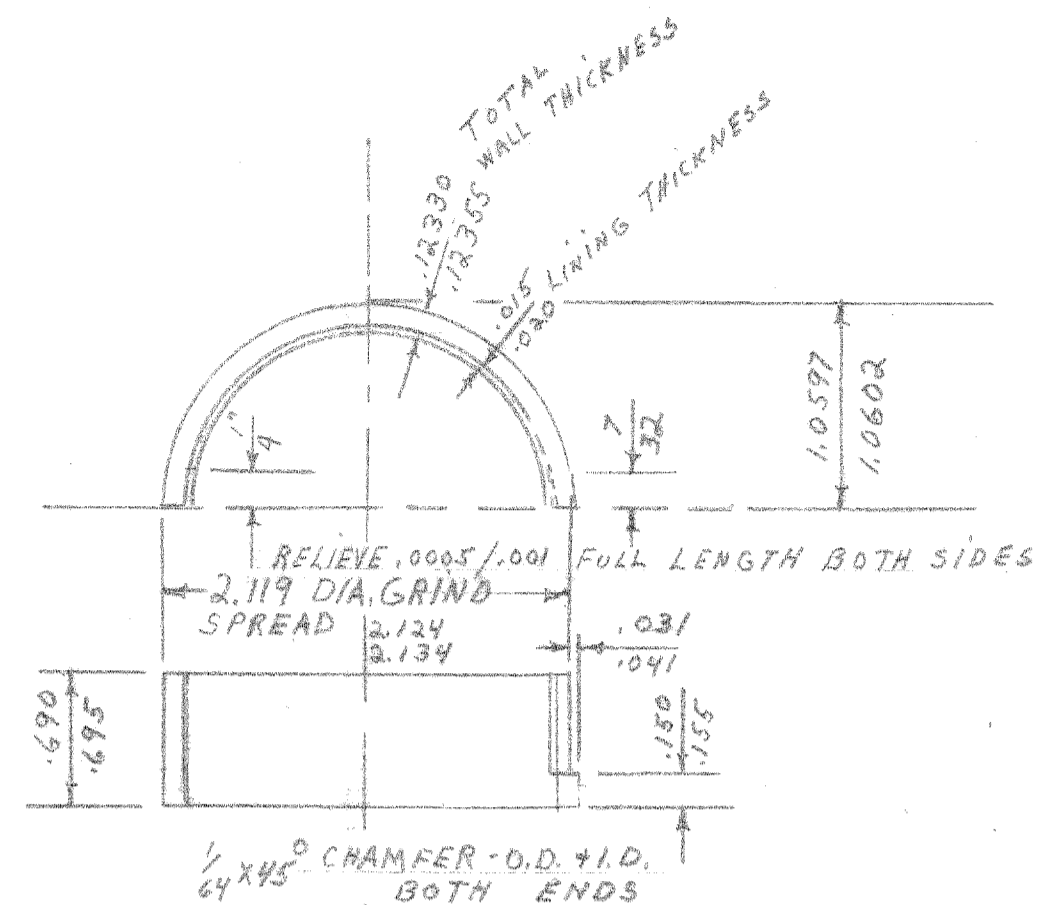


DIAGRAM SHOWING SERVICE UPPER BEARINGS
ALL DIMENSIONS SAME AS B-146-1U EXCEPT AS NOTED IN TABLE 1.

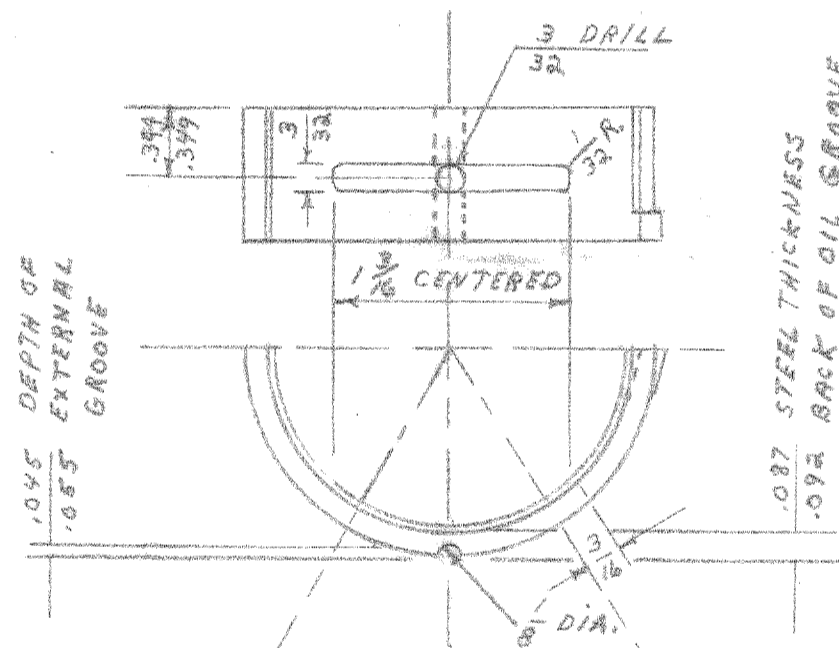
STAMP DESCRIPTION OF BEARING
AS GIVEN IN TABLE 1,
EACH HALF



DESCRIPTION OF BEARING	PART NO.	A TOTAL WALL THICKNESS	B LINING THICKNESS	C HEIGHT	D STEEL THICKNESS BACK OF OIL GROOVE	E O/S DIA.	F SPREAD
STD. O.D.	B-146-2U	.12830	.020	1.0597	.087	2.119	2.124
.010 UNDER I.D.	B-146-2L	.12855	.025	1.0602	.092	2.119	2.134
STD. O.D.	B-146-3U	.13330	.025	1.0597	.087	2.119	2.124
.020 UNDER I.D.	B-146-3L	.13355	.030	1.0602	.092	2.119	2.134
STD. O.D.	B-146-4U	.13830	.030	1.0597	.087	2.119	2.124
.030 UNDER I.D.	B-146-4L	.13855	.035	1.0602	.092	2.119	2.134



DETAIL-STANDARD UPPER BEARING
B-146-1U



FULL DEPTH OF OIL GROOVE WITHIN THIS DISTANCE
THIS ANGLE REMAINS CONSTANT ON ALL BEARINGS STD. & UNDERSIZE

DETAIL-STANDARD LOWER BEARING
B-146-1L

NOTE: THIS BEARING IDENTICAL WITH B-146-1U EXCEPT AS SHOWN

MATERIAL

STEEL BACK S.A.E. # 1010
LINING SAME AS ORIGINALLY SUPPLIED BY GLACIER METALS
WEMBLEY ENGLAND

NOTE:

LIGHT CADMIUM PLATE FOR RUST PREVENTION
BEFORE FINISH BROACH BORE & HEIGHT

STEEL BORE OF ALL BEARINGS IS IDENTICAL

E-113-C	760	2 HALVES			MATERIAL AS SPECIFIED	
MODEL	FOR	PER ASSY.	PER SHIP		ORIGINAL DRAWING	SCALE - FULL SIZE
LETTER	ASS'Y	NO REQUIRED	WEIGHT	4-11-36		
AERONAUTICAL CORP. OF AMERICA LUNKEN AIRPORT CINCINNATI OHIO					BEARING - PLAIN - CON. ROD	