

# AERONCA AIRCRAFT CORPORATION

Middletown, Ohio

## HINGE- STANDARD 2" DOOR

# 1-192 A

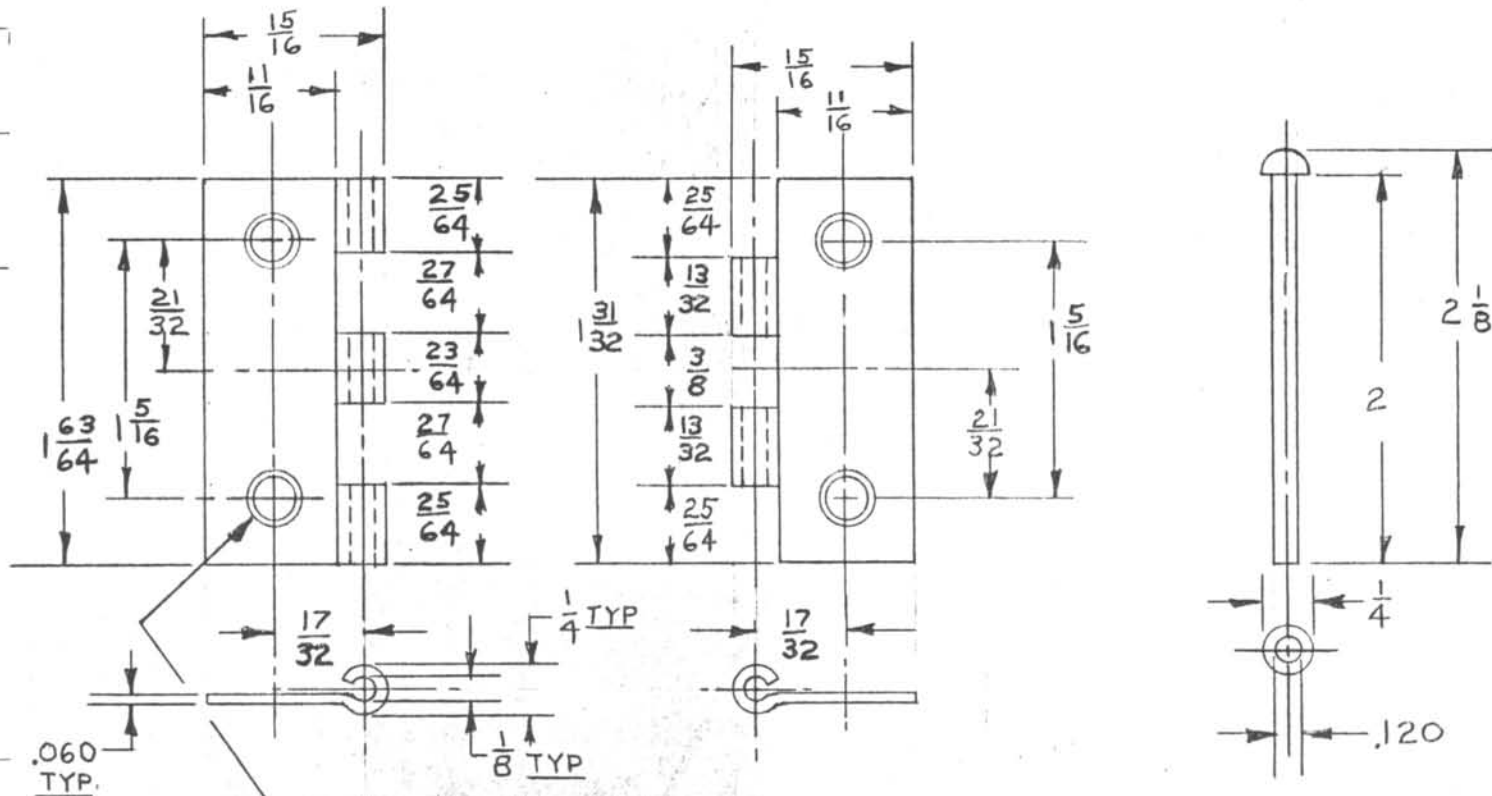
TOLERANCES UNLESS OTHERWISE SPEC. $\frac{1}{32}$				WT. ACT.	FINISH NONE	HEAT TREAT NONE	DATE PRINTED
DIMENSION TOLERANCE TO 2 DEC. PLACES $\pm .03$ TO 3 DEC. PLACES $\pm .010$				WT. CALC.			SCALE FULL SIZE
ANGLES $\pm \frac{1}{4}^\circ$				DR. DEC 5/24/39	PART NO.	DESCRIPTION	SPECIFICATION
MODEL	NEXT ASSEM.	NO. REQ'D PER ASSEM. PLANE		CK. CFP 7/29/39	SIZE		NO. REQ'D.
ALL	—	2	2	STR. <i>J. J. Dale</i> 7/8/47	-1 .060 x 1 $\frac{3}{16}$ x 1 $\frac{63}{64}$	COLD ROLLED STEEL	COMM. 1
				PROJ. <i>J. J. Dale</i>	-2 .060 x 1 $\frac{3}{16}$ x 1 $\frac{31}{32}$	COLD ROLLED STEEL	COMM. 1
				ENG. APP. J.A. WEAGLE	-3 .120 DIA x 2 $\frac{1}{4}$	COLD ROLLED STEEL	COMM. 1

1-192-1

1-192-2

1-192-3

REVISIONS	DATE	6/26/47
	BY	G.A.B.
	CHANGE	A REVISED & REDRAWN
	LET.	A
E. O. 'S. INCLUDED	6764	



NOTE-  
1. HINGE LOOPS MUST MATCH  
2. HINGE ASSEM. IS A COMMERCIAL PRODUCT